



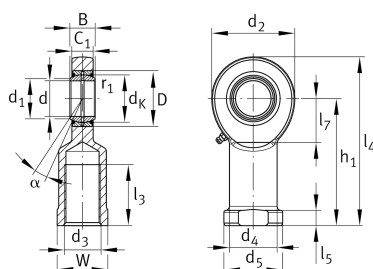
GIL35-DO-2RS

Rod end

Schaeffler ID:
0066352880000

Rod end with internal thread, left hand thread, requiring maintenance, sliding contact surface: steel/steel, DIN ISO 12240-4, dimension series E, type F, sealed

Technical information



Main Dimensions & Performance Data

d	35 mm	Bore diameter bearing
D	55 mm	Outside diameter bearing
B	25 mm	Width inner ring
C_r	79,900 N	Basic dynamic load rating, radial
C_{0r}	159,000 N	Basic static load rating, radial
G_r	0,037 - 0,1 mm	Radial Clearance
	1.43 kg	Weight

Dimensions

d_K	47 mm	Ball diameter
d_1	39.7 mm	Outer flange diameter inner ring
d_2	82 mm	Outer eye diameter
d_3	M36x3	Thread size
d_4	47 mm	Shank diameter
h_1	125 mm	Shank Length Internal thread head
α	6 °	Tilt angle
l_3	60 mm	Thread length Internal thread
l_4	166 mm	Total length internal thread head
l_5	15 mm	length rod end shank
l_7	42 mm	Distance drilling with/shaft start
d_5	58 mm	Shank diameter, large
C_1	21 mm	Width of the rod end
r_{1smin}	0.6 mm	Edge Spacing
W	50 mm	Width Across Flat
d_{OT}	0 mm	Bore diameter bearing, upper tolerance
d_{UT}	-0.012 mm	Bore diameter bearing, lower tolerance
B_{OT}	0 mm	Width inner ring, upper tolerance
B_{UT}	-0.12 mm	Width inner ring, lower tolerance

Temperature range

T_{\min}	-30 °C	Operating temperature min.
T_{\max}	130 °C	Operating temperature max.